

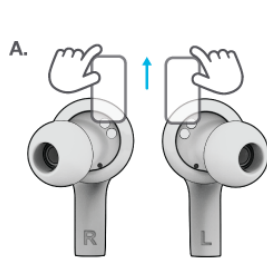
Free Download



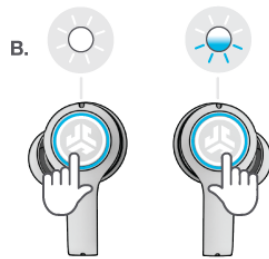
[Bluetooth Headset User Manual](#)

1 AUTO-CONNECTING EARBUDS

- A.** Take earbuds out of the charging case and remove stickers.
B. Press and hold both touch sensors 3+ seconds to turn ON. Left earbud turns **solid white** and Right earbud **blinks blue/white** indicating ready to pair to your device.



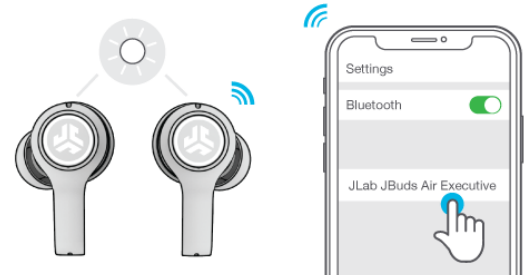
Remove stickers



Press and hold 3+ seconds

2 CONNECTING TO BLUETOOTH

- Select "JLab JBuds Air Executive" in your device settings. Voice prompt "Bluetooth connected" followed by **solid white lights** will indicate you are connected.



[Bluetooth Headset User Manual](#)

Free Download



Our editors independently research, test, and recommend the best products; you can learn more about our review process here.. ,
Ltd Setup instructions, pairing guide, and how to reset

1. [bluetooth headset user manual](#)
2. [yamay bluetooth headset user manual](#)
3. [samsung hm1000 bluetooth headset user manual](#)

We may receive commissions on purchases made from our chosen links. User manual instruction guide for Bluetooth Headset SX-991 Shenzhen Shuaixian Electronic Equipment Co.

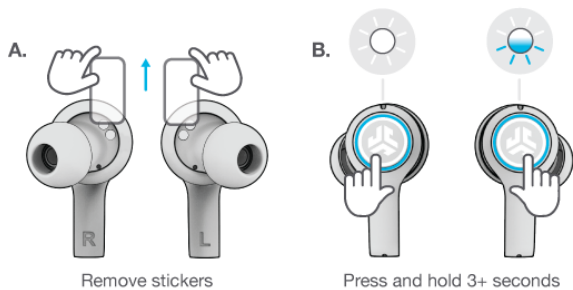
bluetooth headset user manual

bluetooth headset user manual, bluetooth headset user manual marathon, yamay bluetooth headset user manual, plantronics m70 bluetooth headset user manual, samsung hm1000 bluetooth headset user manual, samsung hm1100 bluetooth headset user manual, prtron rover bluetooth headset user manual, prtron bluetooth headset user manual, amkette trubeats bluetooth headset user manual, remax rb-t9 bluetooth headset user manual [Videostudio Pro X6 Crack Download](#)

[Final Cut Pro X 10.4 1 Dmg Torrent](#)

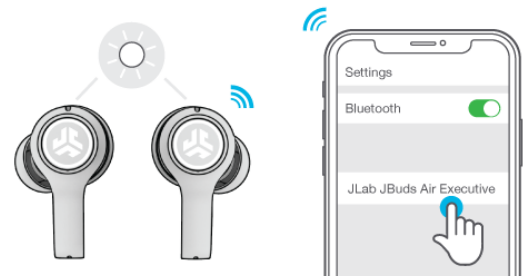
1 AUTO-CONNECTING EARBUDS

- A.** Take earbuds out of the charging case and remove stickers.
B. Press and hold both touch sensors 3+ seconds to turn ON. Left earbud turns **solid white** and Right earbud **blinks blue/white** indicating ready to pair to your device.



2 CONNECTING TO BLUETOOTH

- Select "JLab JBuds Air Executive" in your device settings. Voice prompt "Bluetooth connected" followed by **solid white lights** will indicate you are connected.



[Ipassword MacOS Download](#)

yamay bluetooth headset user manual

[Download Google Tasks For Mac](#)
[Kindle Reader Mac Download Free](#)

samsung hm1000 bluetooth headset user manual

[Wavetek Meterman 10x1 Manual](#)

ae05505a44 [vray 3ds max 2012 64bit full crack bandicam](#)

ae05505a44

[Autocad For Mac German](#)